

**2021**

---

[lsheng@ccxi.com.cn](mailto:lsheng@ccxi.com.cn)

[xpzhang@ccxi.com.cn](mailto:xpzhang@ccxi.com.cn)

(010)66428877

(010)66426100

2021 07 14



# 信用等级通知书

信评委函字\_\_\_\_\_号



2020							
				(%)			
AA <sup>+</sup> /	16	MTN003	AA <sup>+</sup> /	2020/11/26		--	
	17	MTN001	AA <sup>+</sup> /				
AA <sup>+</sup> /	16	MTN003	AA <sup>+</sup>	2020/06/23		<a href="#">C160400_2019_01</a>	
	17	MTN001	AA <sup>+</sup>				
AA <sup>+</sup> /	17	MTN001	AA <sup>+</sup>	2016/12/01		--	
AA <sup>+</sup> /	16	MTN003	AA <sup>+</sup>	2016/07/26		--	

2020							
				(%)			
				249.29	67.22	74.81	10.58
				240.59	70.12	76.47	4.96
				423.73	63.50	85.21	-14.17

19	G2	AA	AA <sup>+</sup> /	2020/11/26	5.00	5.00	2019/09/26~2024/09/26	3+2
16	MTN003	AA	AA <sup>+</sup> /	2020/11/26	5.00	5.00	2016/11/14~2021/11/14	5+N
17	MTN001	AA	AA <sup>+</sup> /	2020/11/26	10.00	10.00		

" 19 G2"

2020

" "

2021

GDP 18.3%

GDP

GDP

50%

3

CPI

PPI

CPI

PPI

2021



2019

2014	5,329.9	2019
12,174.2	128.41%	

2025

2019 10

2016

2015

472.00

2019

684.41

PPP

PPP

2019 10

2020 11

2021

2021 1 1

2019

1.1 /





2021 3

	BOT		600 /
	BOT		1,200 /
	BOT		1,000 /
	BOT		600 /
	BOT		800 /
	BOT		600 /
	BOT		350 /
	BOT		303 /
	BOT		



	BOT	6.00	5.00	30	2012.09
	BOT	0.60	0.30	26	2014.06
	BOT	3.00	1.50	30	



PPP

15,669.62

7 2020





2021 1 23

10

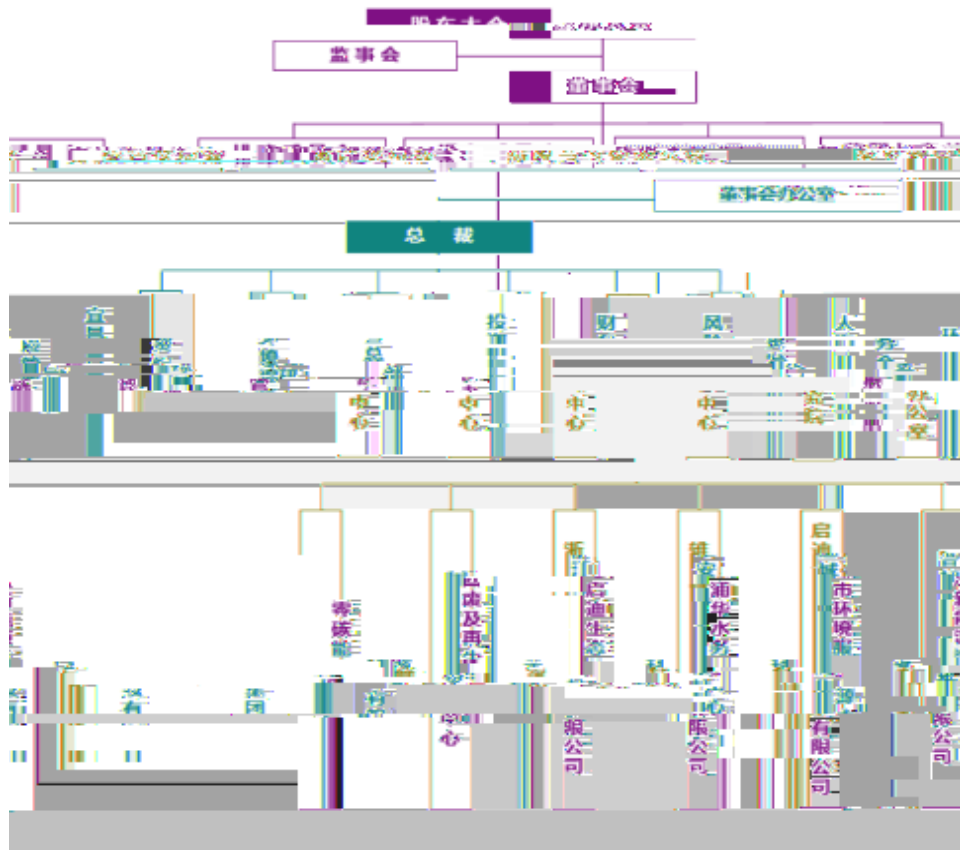
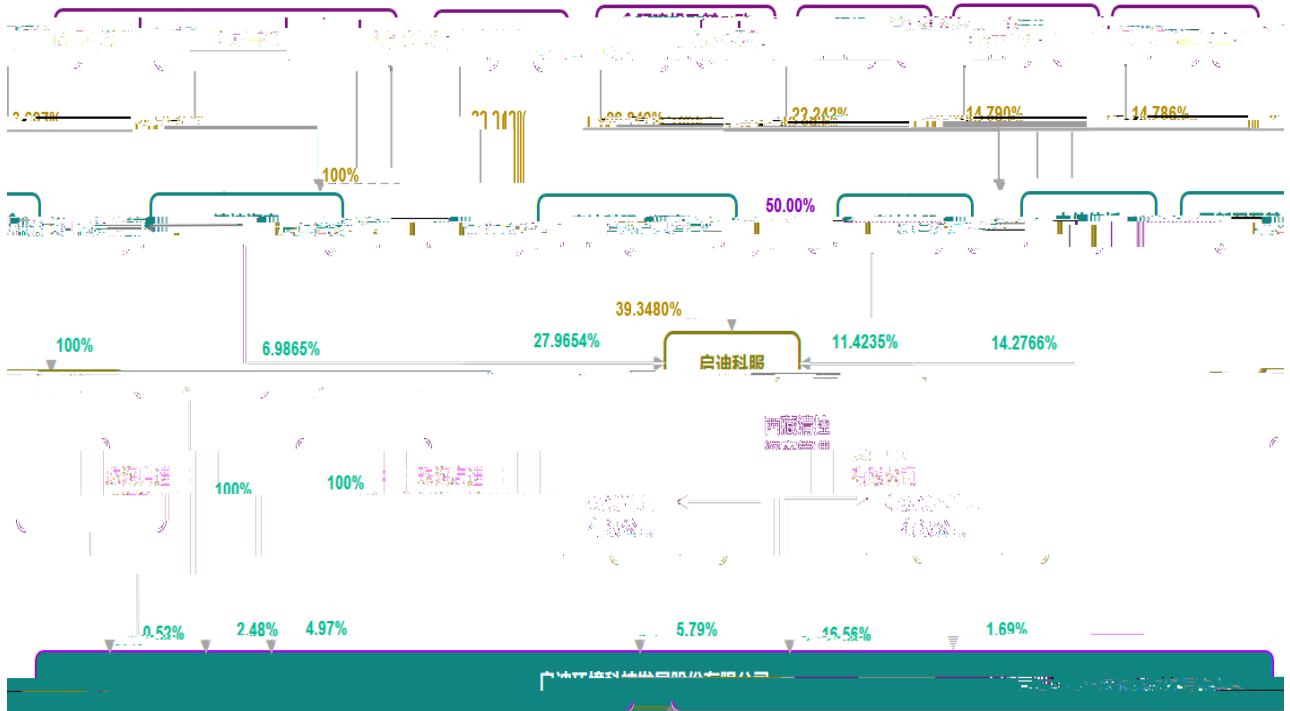
6.5%

2021 6 21

20,910

2021 3 22

3







AAA	
AA	
A	